



UNIVERSITY OF GOTHENBURG
CENTRE FOR EUROPEAN RESEARCH

'Try to see it my way'. On frame congruence between lobbyists and European Commission officials

Frida Boräng and Daniel Naurin
University of Gothenburg



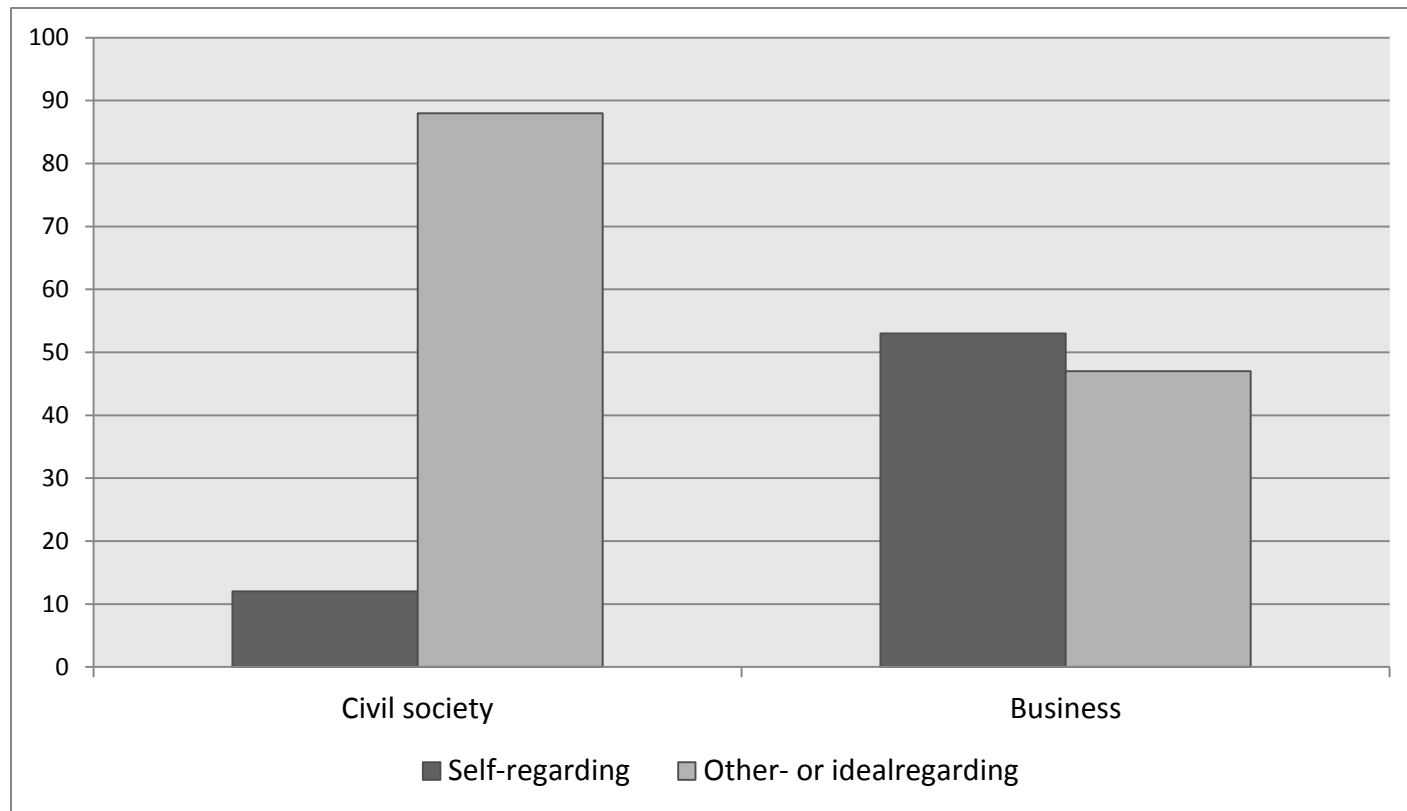
What is at stake?

INTEREURO data:

Interviews with 141 lobbyists and Commission officials on 55 legislative proposals, 2008-2010.

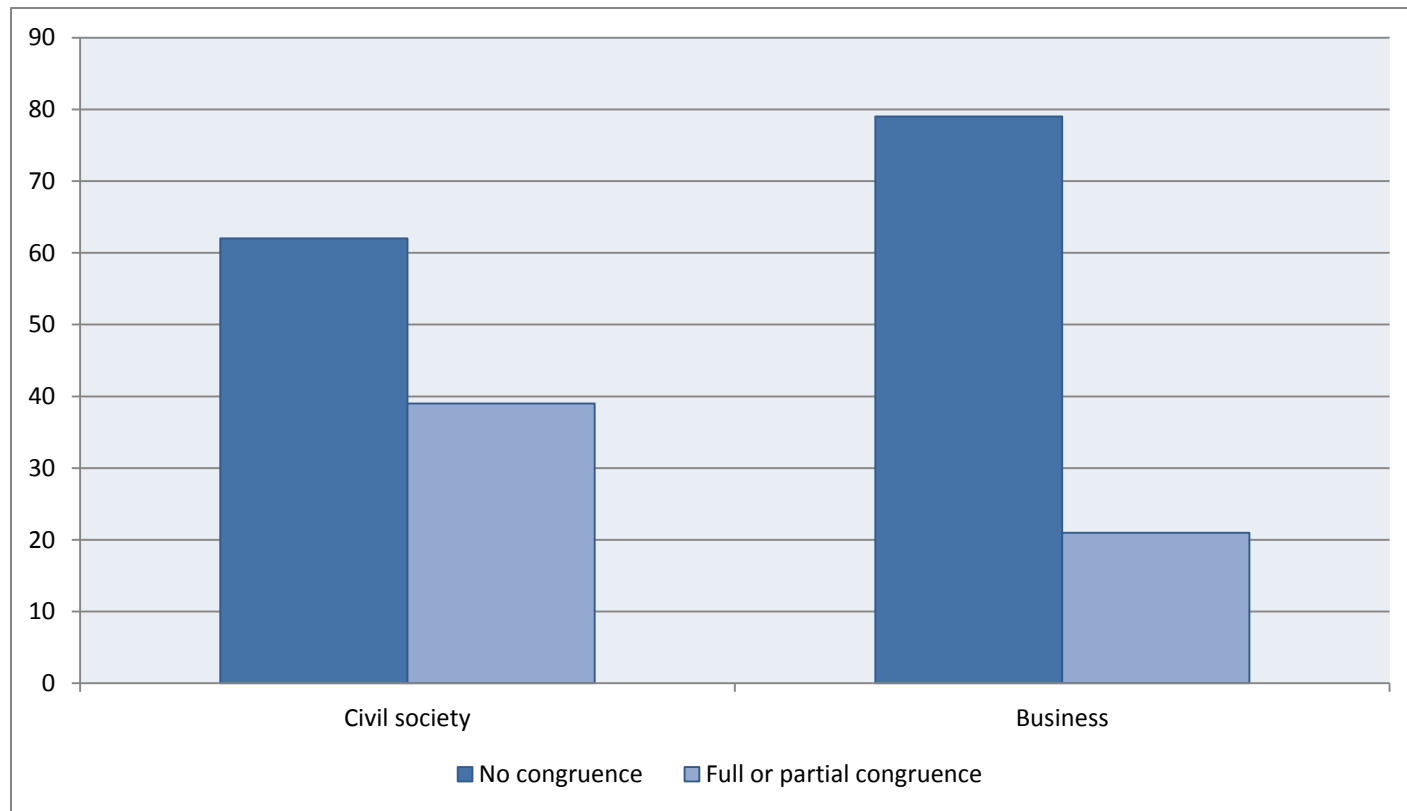


Types of frames held by business and civil society



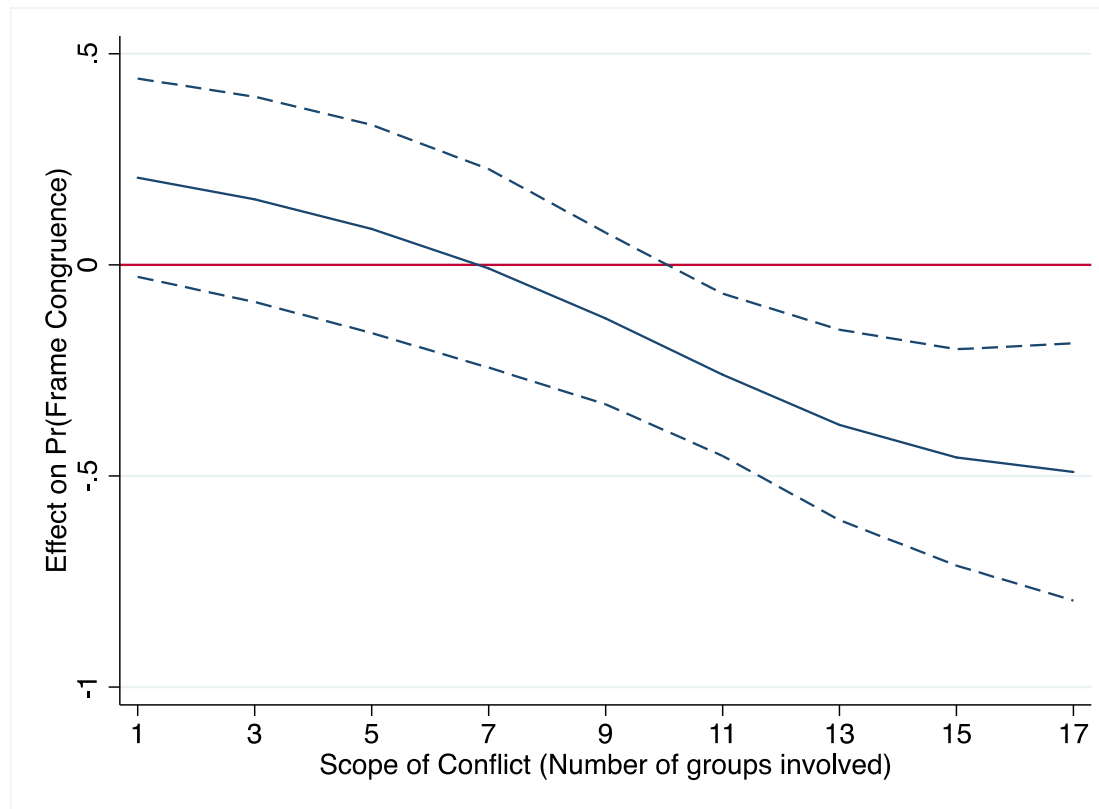


Frame congruence with Commission officials



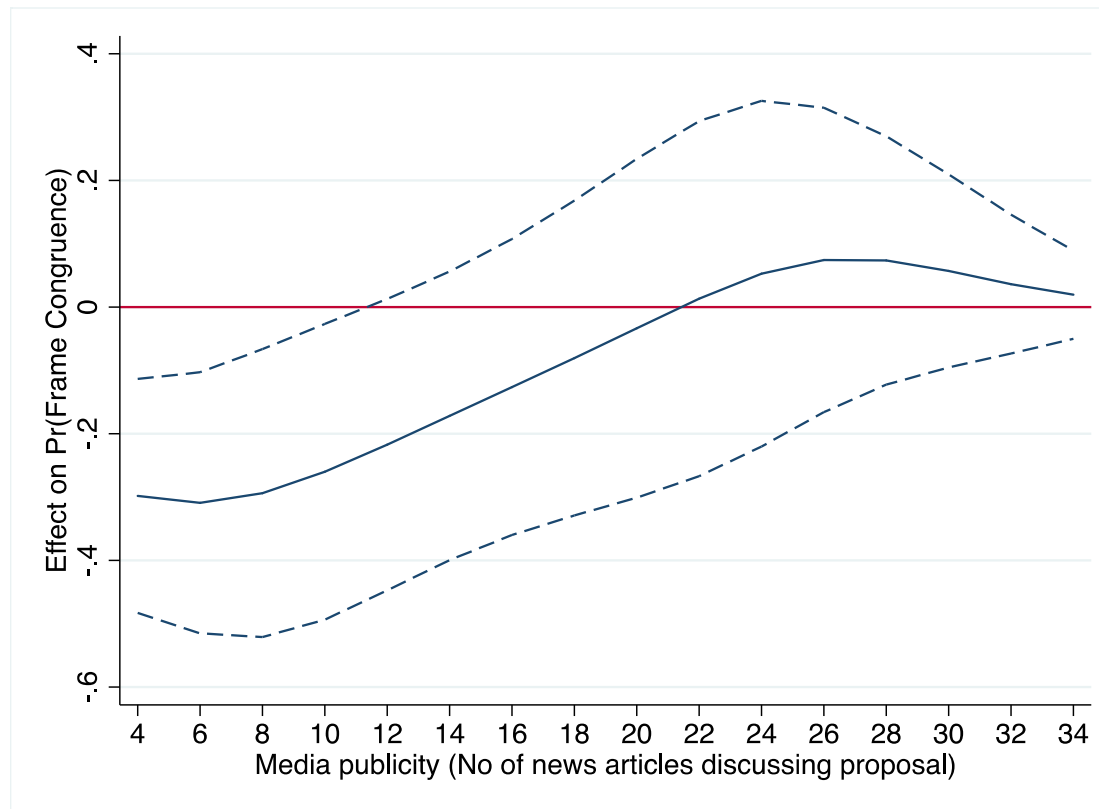


Relative frame congruence depends on the scope of conflict





Relative frame congruence depends on the level of media attention





In sum

- Civil society overall more in line with Commission officials' views of what is at stake
- Odds even out when
 - few groups are involved
 - there is high attention (for business) in media